



Kennametal Inc. (22,000 square feet)

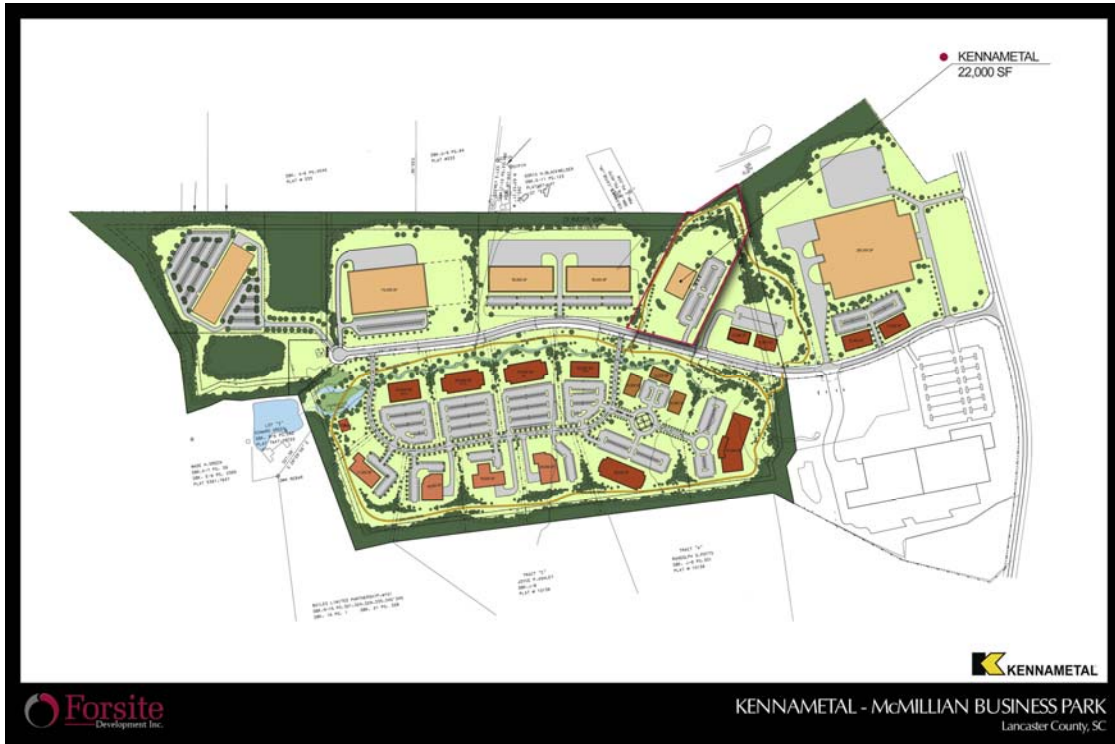
MacMillan Industrial Park
1662 MacMillan Park Drive
Fort Mill, South Carolina 29707
Lancaster County

BUILD-TO-SUIT

Completed August 2007

ALL INFORMATION FURNISHED REGARDING PROPERTY FOR SALE, RENTAL OR FINANCING IS FROM SOURCES DEEMED RELIABLE BUT NO WARRANTY OR REPRESENTATION IS MADE AS TO THE ACCURACY THEREOF AND SAME IS SUBMITTED SUBJECT TO ERRORS, OMISSIONS, CHANGE OF PRICE, RENTAL OR OTHER CONDITIONS PRIOR SALE, LEASING OR FINANCING OR WITHDRAWAL WITHOUT NOTICE, NO LIABILITY OF ANY KIND IS TO BE IMPOSED ON THE BROKER HEREIN.

2115 Rexford Road, Suite 555 | Charlotte, NC | T: 704.364.9100 | F: 704.364.0090

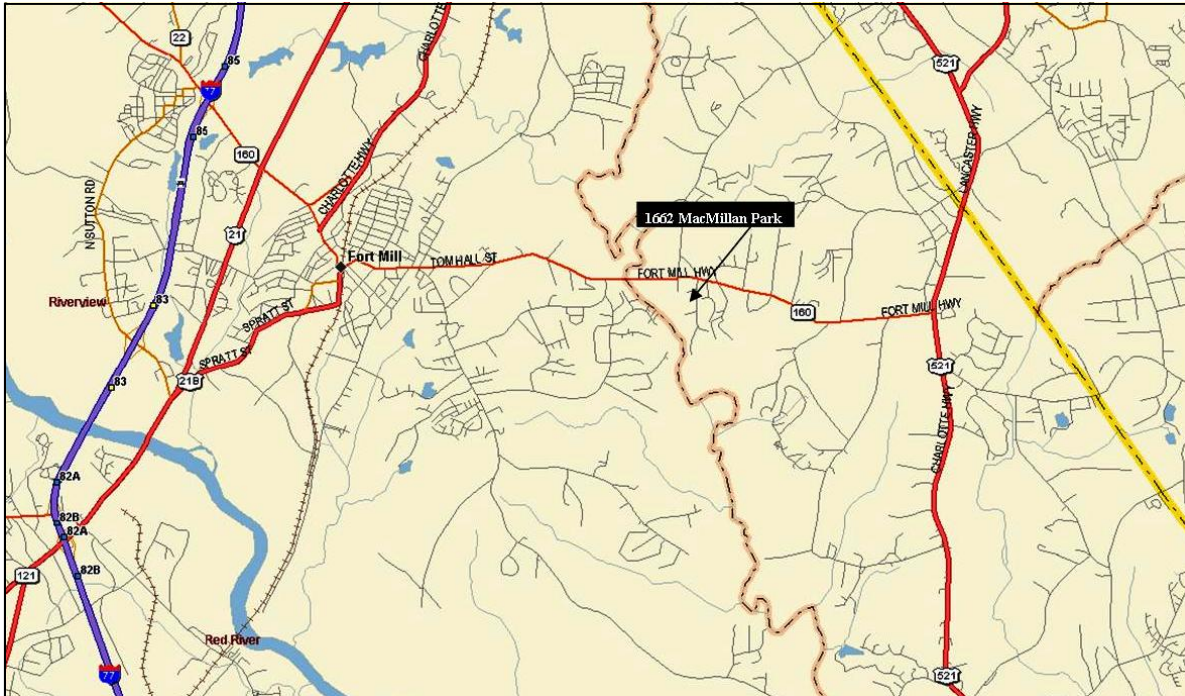


Kennametal Inc. (22,000 square feet)

MacMillan Industrial Park
1662 MacMillan Park Drive
Fort Mill, South Carolina 29707
Lancaster County

ALL INFORMATION FURNISHED REGARDING PROPERTY FOR SALE, RENTAL OR FINANCING IS FROM SOURCES DEEMED RELIABLE BUT NO WARRANTY OR REPRESENTATION IS MADE AS TO THE ACCURACY THEREOF AND SAME IS SUBMITTED SUBJECT TO ERRORS, OMISSIONS, CHANGE OF PRICE, RENTAL OR OTHER CONDITIONS PRIOR SALE, LEASING OR FINANCING OR WITHDRAWAL WITHOUT NOTICE, NO LIABILITY OF ANY KIND IS TO BE IMPOSED ON THE BROKER HEREIN.

2115 Rexford Road, Suite 555 | Charlotte, NC | T: 704.364.9100 | F: 704.364.0090



Kennametal Inc. (22,000 square feet)

MacMillan Industrial Park
1662 MacMillan Park Drive
Fort Mill, South Carolina 29707
Lancaster County

ALL INFORMATION FURNISHED REGARDING PROPERTY FOR SALE, RENTAL OR FINANCING IS FROM SOURCES DEEMED RELIABLE BUT NO WARRANTY OR REPRESENTATION IS MADE AS TO THE ACCURACY THEREOF AND SAME IS SUBMITTED SUBJECT TO ERRORS, OMISSIONS, CHANGE OF PRICE, RENTAL OR OTHER CONDITIONS PRIOR SALE, LEASING OR FINANCING OR WITHDRAWAL WITHOUT NOTICE, NO LIABILITY OF ANY KIND IS TO BE IMPOSED ON THE BROKER HEREIN.

2115 Rexford Road, Suite 555 | Charlotte, NC | T: 704.364.9100 | F: 704.364.0090